



# LTS LINK

JAN 2023



## SECURITY CAMERAS POWERED BY TECH

### INTRO

With the rise of video analytics, the new generation security cameras are increasingly featuring AI technology such as **Human/Vehicle Detection** and Perimeter Protection.

Explore our best-selling security cameras featured with **MD 2.0** and **Active Deterrence**, LTS NDAA-compliant Pro-VS line, and cases of industry applications.

LTS LINK

### TABLE OF CONTENTS

The Rise of Video Analytics • P.2

Panoramic Camera • P.3

Active Deterrence • P.4

NDAA Compliant Pro-VS • P.5

Education Applications • P.6

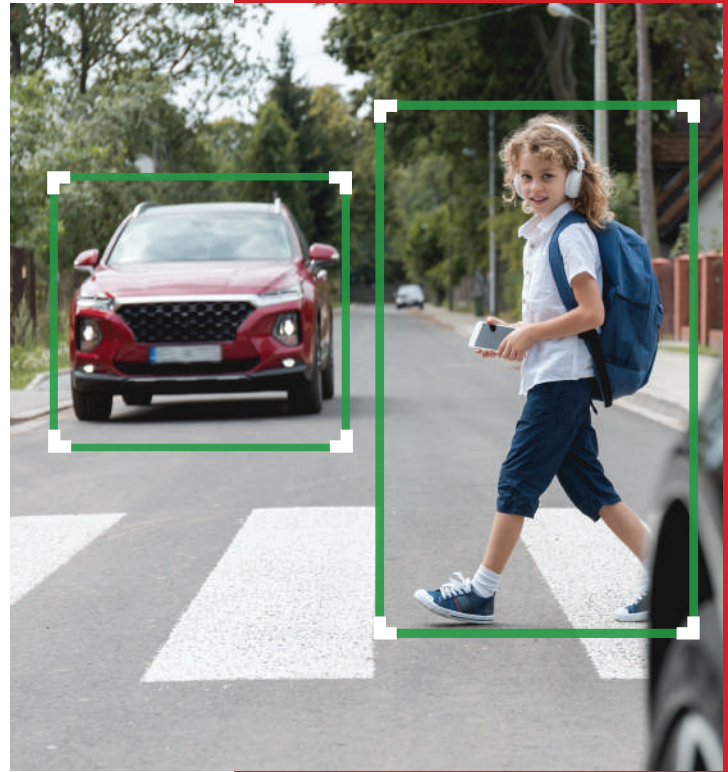
# THE RISE OF VIDEO ANALYTICS

## TRENDS

According to the research report by Markets and Markets™, the global video analytics market is projected to grow from \$7.1 billion in 2022 to **\$20.3 billion** by 2027, with a compound annual growth rate (CAGR) of 23.4%.

The drivers for this growth include:

- Significant **decrease in crime rate** due to video surveillance
- Limitation of manual video analysis and demand for **enhanced video analytics**
- The growing needs to leverage business intelligence for advanced operations
- Reduced costs of video surveillance equipment and **long-term ROI**



The growth of the IP camera segment and video analytics has been fueled by the increasing demand for Video Surveillance as a Service (**VSaaS**), the ongoing transition away from analog cameras, and the integration of the Internet of Things (IoT) into surveillance systems.

Transportation and logistics industries will be especially powered by video analytics such as **facial recognition**, Human/Vehicle Detection, unidentified object detection, and **car plate recognition**, all of which can proactively detect and prevent risks.

Future opportunities will include the emergence of innovative technologies enabling further application of video analytics, **more affordable AI** for the mass market, and higher long-term ROI of video surveillance investment.

*Reference:  
Research and Markets, Allied Market Research*



# LTS PANORAMIC IP CAMERA

## FEATURED

The LTS **Color 24/7** Panoramic IP Camera provides vivid color images even in dim light. With the image fusion algorithm, the dual lenses present a **180° field of view**, delivering detailed and seamless panoramas.

Key Features:

- 180° Panoramic View
- Color 24/7 Full Detail and Color Capture
- Active Deterrence
- Motion Detection 2.0
- 0.0005 Lux Ultra Low Light Sensor

SKU#: [LTCMIP3C8PW-SDL](#)



## TECHNOLOGY IN LTS CAMERAS

**MD 2.0** Human and Vehicle Classification Technology

- Human/Vehicle Target Detection
- Find Footage in Seconds
- Get Instant App Notifications

A woman in a brown coat and black pants is walking across a city street, looking at her phone. A green bounding box is drawn around her, indicating target detection. In the background, there are cars and city lights.

**Color 24/7** 24/7 Full-Color Surveillance

- Ultra Low Lux
- Captures Footage Detail in Darkness and Inclement Weather

Two images of a white car in a parking lot. The top image is labeled 'DAY' and shows the car in bright light. The bottom image is labeled 'NIGHT' and shows the car in low light, demonstrating the camera's ability to capture color in darkness.

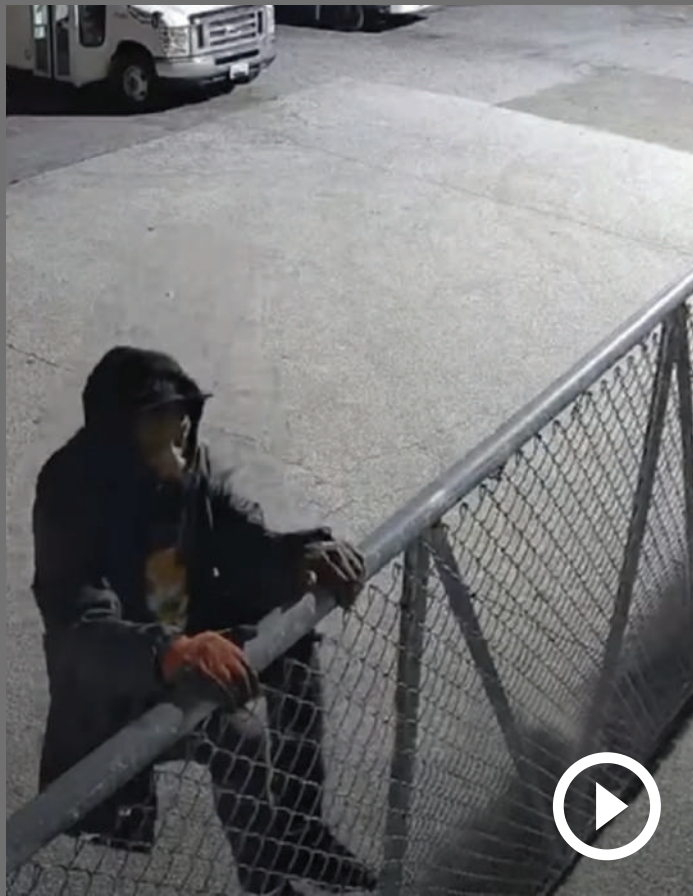
# ACTIVE DETERRENCE TECHNOLOGY

## FEATURED

LTS Active Deterrence is an **intelligent video analysis technology** based on deep learning algorithms that detect and classify targets as humans or vehicles and quickly **deter intruders** with the built-in audio alarm and strobe light.

Features:

- High-volume **audible speaker and strobe light** for effective deterrence
- Instant notifications to the surveillance center for swift incident response
- Accurate, consistent, and clear video footage for **post-event investigations**



## INTRUDER DETERRENCE

### CASE STUDY

A LTS camera caught this trespasser at a storage unit in the middle of the night. The camera's Active Deterrence feature was triggered once the intruder entered the active zone. He was immediately scared away by the strobe lights and audio alarm that proactively **prevented a potential break-in**.

By detecting critical targets, issuing instant alerts, and **detering intruders with visual and auditory alarms**, our IP Cameras with Active Deterrence create an effective line of defense for neighborhoods, warehouses, schools, office buildings, airports and other necessary locations.

Check out [LTS cameras with Active Deterrence](#)

# LTS NDAA COMPLIANCE



## COMPANY

LTS is committed to providing certified products with NDAA Section 889 compliance. We're proud to introduce our latest video surveillance line: **Pro-VS**.

LTS Pro-VS cameras and NVRs do not use or deploy critical components and SoCs (System on Chip) produced by NDAA-banned vendors.

Pro-VS products meet the requirements of government bureaus, schools, and other **federally sponsored institutions**.



Please contact your [local sales](#) for details.

## NDAA COMPLIANT PRODUCT LINE

### PRO-VS

#### IP Camera

- Turret/Dome/Bullet/Fisheye/PTZ Camera
- From 2MP to 4K/8MP Resolution
- Fixed Lens and Vari-Focal Lens Available
- Color 24/7, MD 2.0 and True WDR Available

#### NVR/VMS

- 4 to 30,000 Channels
- Up to 12MP Recording Resolution

#### PoE Switches

- 4-24 Ports



# APPLICATIONS IN EDUCATION

## INDUSTRY USE

LTS provides a full range of video security solutions that suit various needs of educational institutes, enhancing safe campuses, smart classrooms, efficient student attendance management, and more.

K-12 schools, higher education and remote learning institutions can all benefit from our **all-in-one video surveillance systems**.

LTS is determined to build a **safer and smarter learning environment** for both today and the future.



## ENHANCE CAMPUS SECURITY

### CASE STUDY

#### Background

A large-scale Catholic school in the United States needed a more secure environment inside the campus and within classrooms. Their objective was to protect the safety of teachers and students both during and after school hours.

#### Solution

Following site inspections and evaluation, LTS suggested using a combination of cameras, including fixed lens bullet and turret cameras, pan-tilt-zoom (PTZ) cameras, and **panoramic cameras** featured with Color 24/7, MD 2.0 and Active Deterrence. Paired with enterprise-level NVRs, this video surveillance system provided **maximum protection** for the school.



## CONTACT US

Arizona-Phoenix | California-Los Angeles\* | California-San Francisco  
Florida-Miami | Georgia-Norcross | Illinois-Elk Grove Village | Maryland-Beltsville  
New Jersey-Mount Laurel\* | New York-Port Washington | Texas-Dallas | Texas-Houston\*

[www.LTSecurityinc.com](http://www.LTSecurityinc.com)