

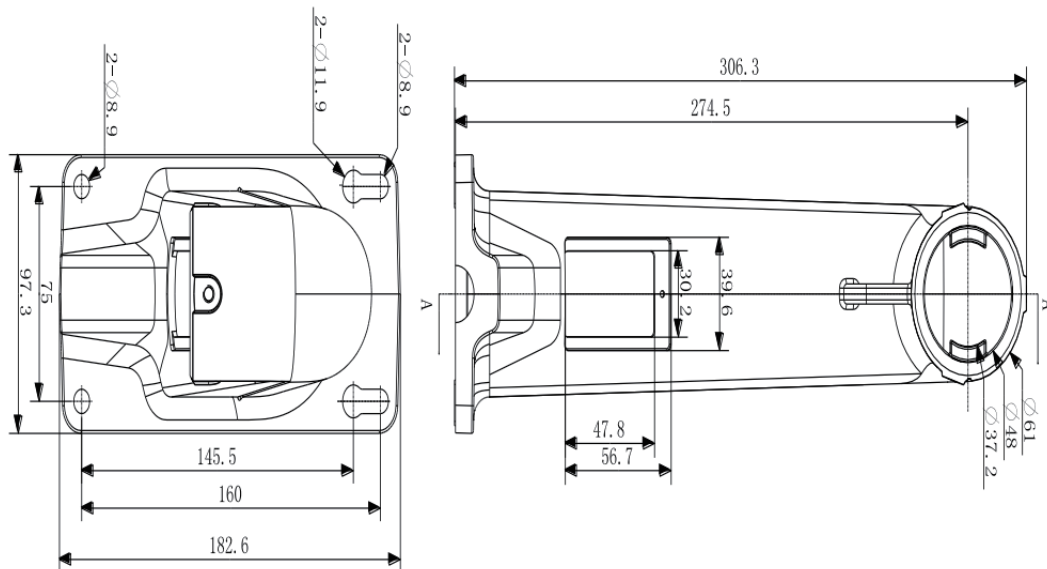
Wall Mount / Bracket - Indoor / Outdoor LTB762

Designed for speed dome wall mounting



Specifications	
Parameters	Wall Mount Bracket for PTZs - Indoors & Outdoors
Materials	Aluminum alloy
Dimensions	3.8 x 7.2 x 12.0" (97 x 182 x 305 mm)
Weight	2.3 lbs (1,050 g)

Dimensions:



©2015 LT Security, Inc. All Rights Reserved. White papers, data sheets, quick start guides, and/or user manuals are for reference only and may or may not be entirely up to date or accurate based upon the version or models. Product names mentioned herein may be the unregistered and/or registered trademarks of their respective owners.