

NVMS-7000 Client Software

Quick Start Guide (V2.0.0)

Thank you for purchasing our product. If there is any question or request, please do not hesitate to contact the dealer.

This manual applies to **NVMS7000**.

This manual may contain several technically inaccurate points or printing errors, and the content is subject to change without notice. The updates will be added into the new version of this manual. We will readily improve or update the products or procedures described in the manual.

1. Overview

This guide provides only brief instructions on the installation, uninstallation, and some basic operations such as the live view, record and playback of NVMS7000. For detailed information of how to use the software, please refer to the *User Manual of NVMS7000 V2.0.0*.

2. System Requirements

Operating System: Microsoft Windows XP / Windows 2003 32-bit, Windows 7 / Windows 2008 32-bit or 64-bit

CPU: Intel Pentium IV @ 3.00 GHz or above

Memory: 1G or above

Display: 1024*768 resolution or above

Note: For high stability and good performance, these above system requirements must be met.

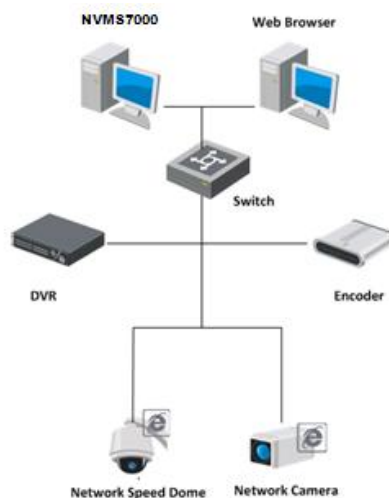
3. Deployment Schemes

NVMS7000 can be used in the local area network (LAN) and the wide area network (WAN). In this document, only some of the connection deployment schemes are displayed.

Note: In the real situation, the devices connected, such as the DVRs, NVRs, network cameras, etc., are scalable.

3.1 In the Local Area Network

3.1.1 A Simplified Scheme in LAN



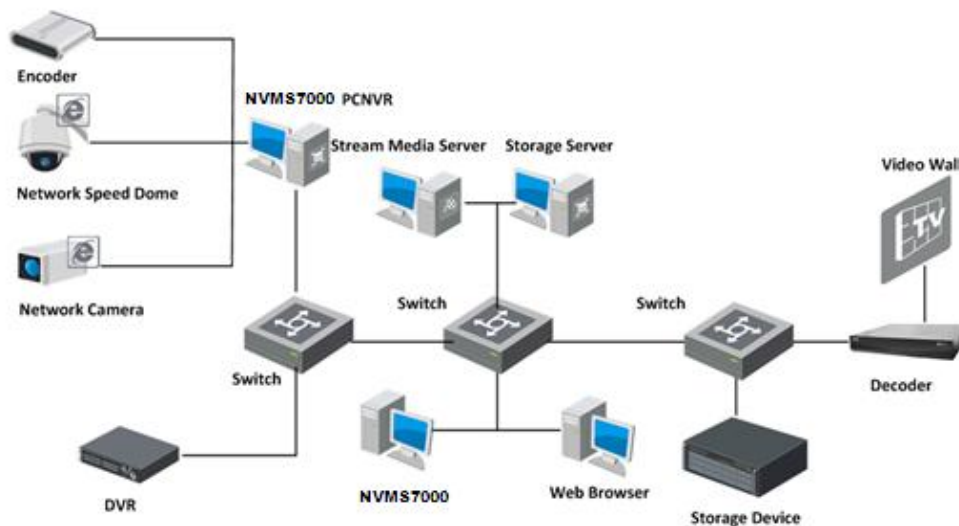
Application Scenario:

1. Only one or small quantities of clients need to get video stream from the devices.
2. The client and devices are in the same local subnet.

Hardware Required:

1. Network cameras, DVRs, etc.
2. PC installed with NVMS7000 client.
3. Switch or router.

This deployment scheme is convenient and cost-effective. Only the NVMS7000 client software is required and you can get direct access to the connected devices, such as the network cameras, DVRs, etc.

3.1.2 A Complete Scheme in LAN**Application Scenario:**

1. Multiple clients need to get video stream from the devices.
2. There is no hard disk on the device side or there are disks on the device side, but the record files need to be backed up for extra insurance.

Hardware Required:

1. Network cameras, DVRs, etc.
2. PCs installed with NVMS7000 client, NVMS7000 PCNVR, Stream Media Server and Storage Server.
3. Switch or router.

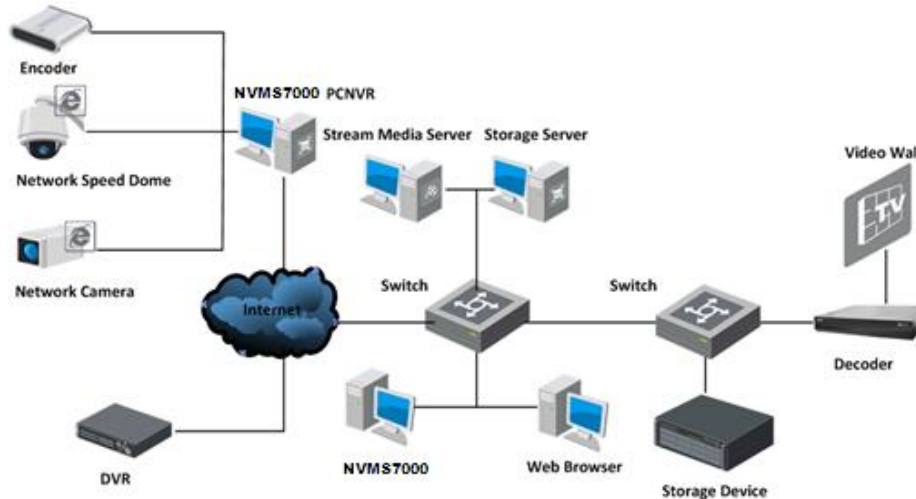
The DVR, HDVR, NVR, NVMS7000 PCNVR can connect to and manage the cameras, speed domes, video encoders, etc., and the NVMS7000 client can be used to manage the DVR, HDVR, NVR, PC NVR which provide relatively complete function of the management.

The stream media server can be adopted to forward the video stream so as to lower the network load of the devices. The record files can be stored on the HDDs of the local device, or on the remote

storage server. You can also access the client through the web browsing and do some basic operations, including live view, playback, etc.

3.2 In the Wide Area Network

3.2.1 Statistic IP in WAN



Application Scenario:

1. The devices need to be accessed in WAN.
2. Statistic IP addresses are assigned to the connected devices in WAN.

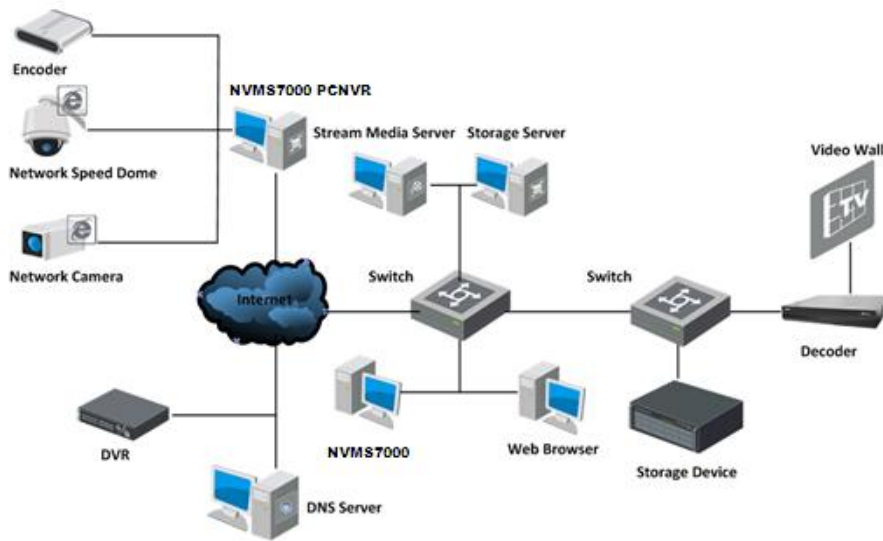
Hardware Required:

1. Network cameras, DVRs, etc.
2. PCs installed with NVMS7000 client, NVMS7000 PCNVR, Stream Media Server and Storage Server.
3. Switch or router.

Statistic IP address can be assigned to the device in WAN and the NVMS7000 client can access the device directly through the IP address. It is costly when there are multiple devices connected.

You can adopt the router to connect to the Internet, assign a statistic IP address to the router, and then get access to the devices through the router IP address and port number.

3.2.2 Dynamic IP in WAN



Application Scenario:

1. The devices need to be accessed in WAN.
2. The devices can be accessed through device domain names (registered on DNS Server) in WAN.

Hardware Required:

1. Network cameras, DVRs, etc.
2. PCs installed with NVMS7000 client, NVMS7000 PCNVR, Stream Media Server and Storage Server.
3. Switch or router.

You can register domain names for the devices on the DNS server, such as Peanuthull, DynDNS, HiDDNS, etc., and then get access to the devices through the device domain names.


When there are multiple devices connected to the Internet via the router, you can configure domain name on the router, and then get access to the devices through the router domain name and port number, thus to reduce the cost of the domain name.

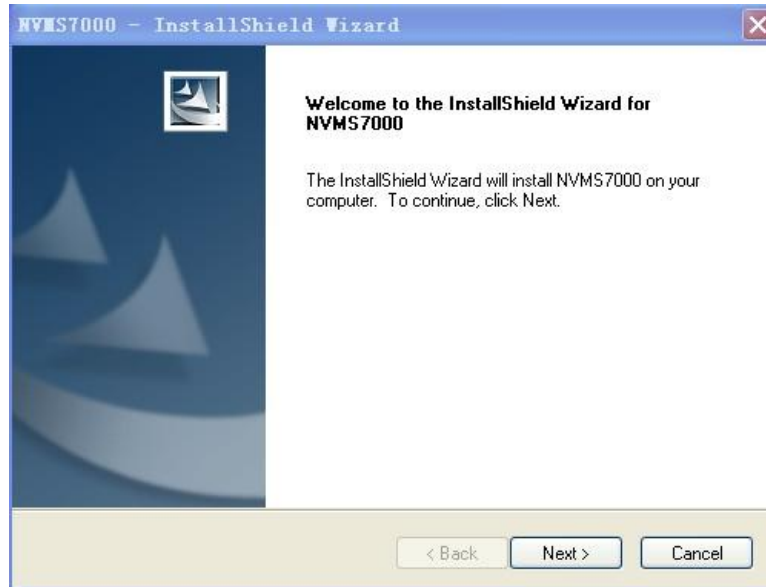
4. Installation and Uninstallation

4.1 Installation

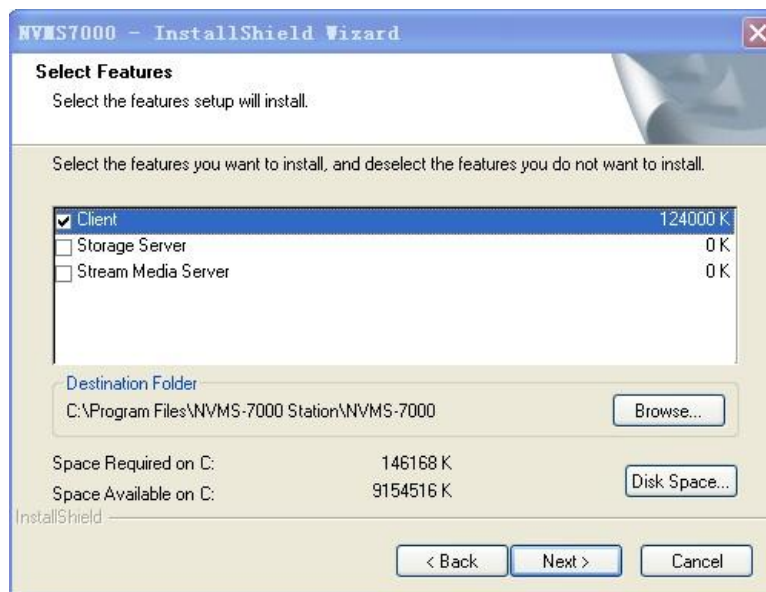
Insert the installation media into the appropriate computer.

Perform the following steps to install the NVMS7000 client software.

1. Double-click the program file  **NVMS7000** to enter the welcome panel of the Install Shield Wizard. Click **Next** to start the Install Shield Wizard.



2. On the next panel, you are prompted to select the function module to install.



Storage Server: The storage server performs as a NVR installed on the PC and the record files can be stored on the storage server.

Stream Media Server: The video stream can be forwarded through the stream media server, thus to lower the load of the device.

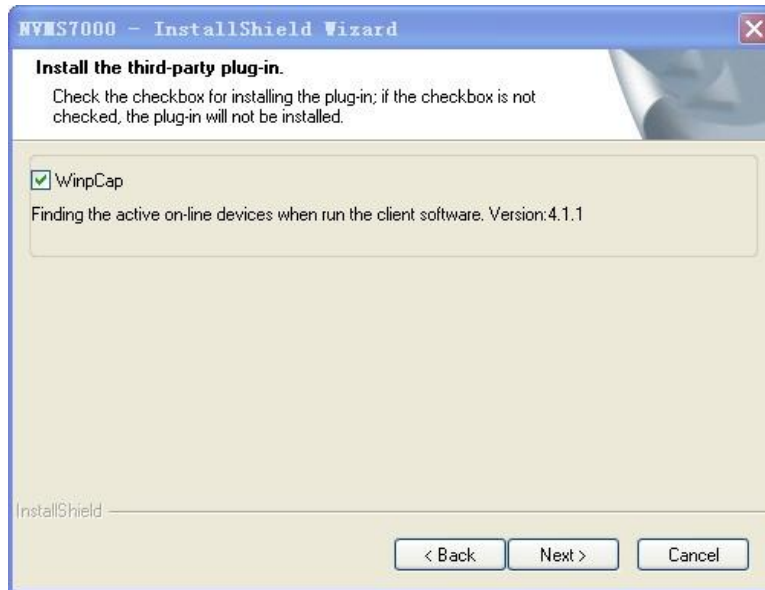
Set installation directory where the client software is to be installed. You can either accept the default directory that is displayed, or click **Browse** and select a different directory.

You can also click **Disk Space** to choose the disk drive to install the software, and check the space information of the disk on the panel.

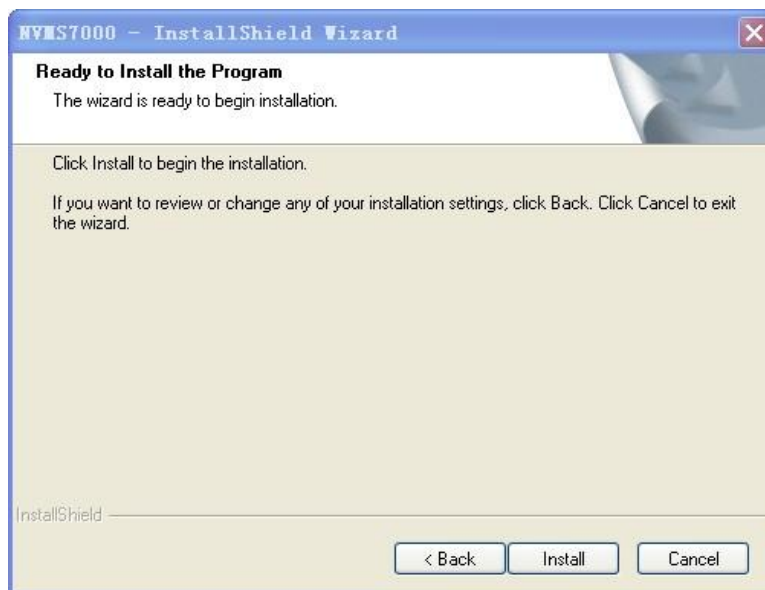
Note: The default directory is `C:\Program Files\NVMS7000 Station\NVMS7000`.

Click **Next** to continue.

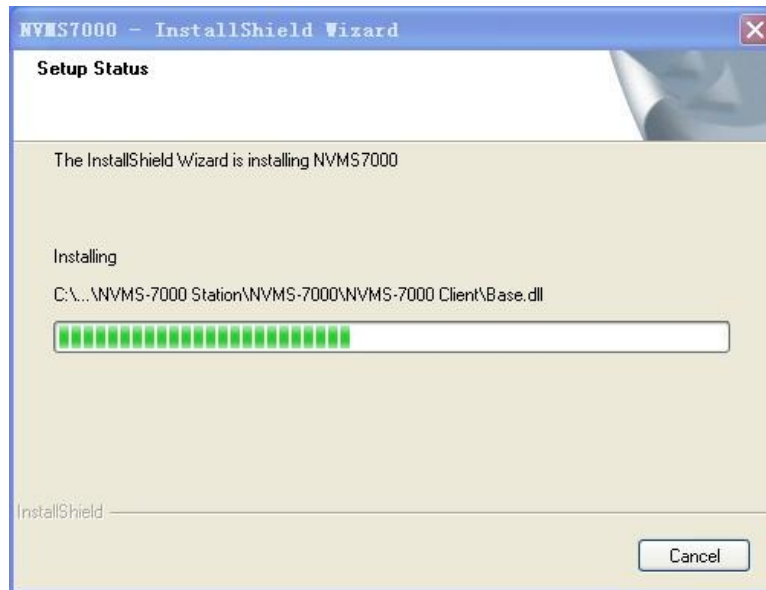
3. Install the WinpCap plug-in according to the prompts to detect the online devices when running the client software.



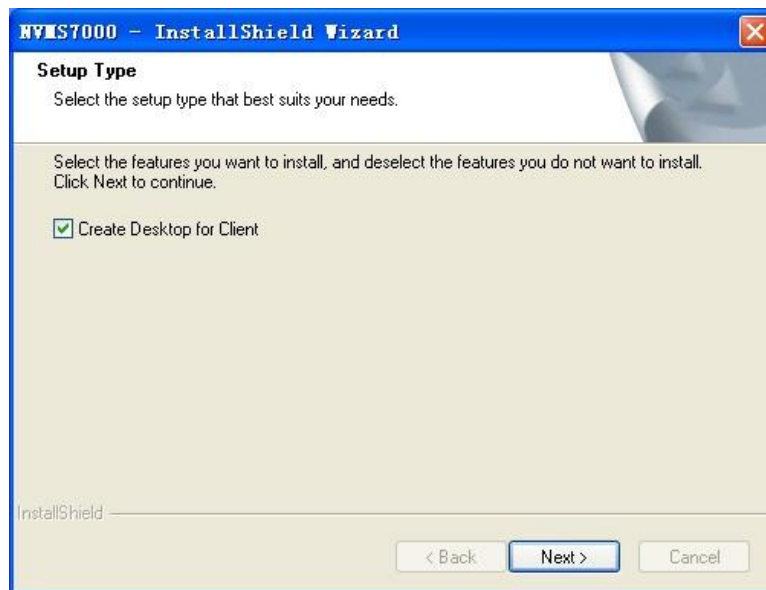
4. Read the pre-install information and click **Install** to begin the installation.



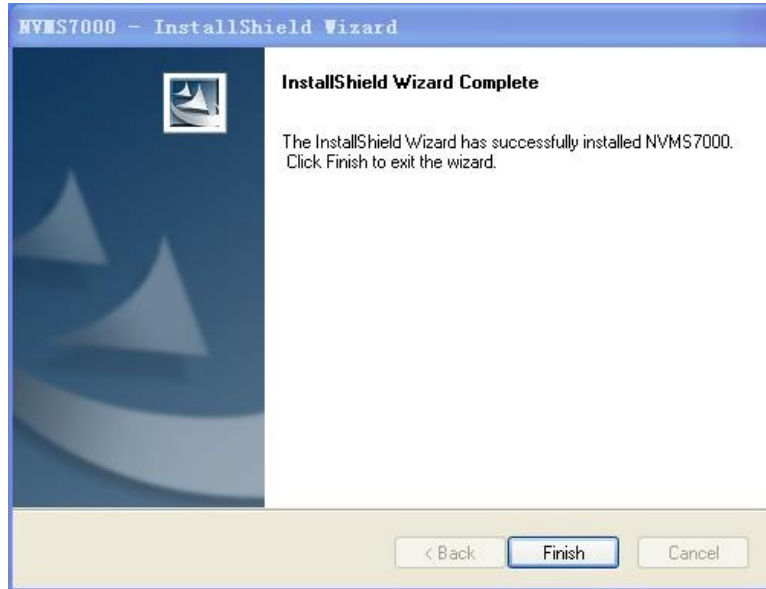
5. A panel indicating progress of the installation is displayed. A percentage completion bar is updated as the installation progresses.




6. Select the setup type according to your need.
You can check the checkbox **Create Desktop for Client** to create a shortcut icon on the desktop for the client software.

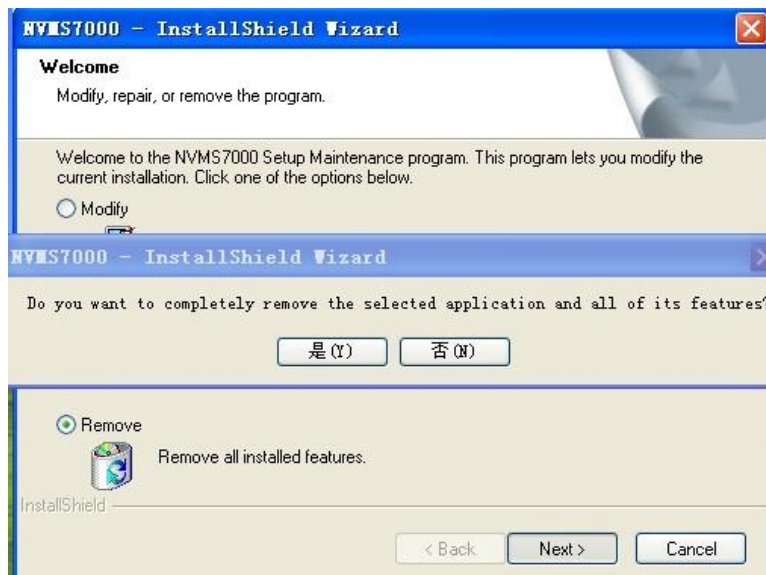


7. Read the post-install information and click **Finish**.



4.2 Uninstallation

Double-click the program file  **NVMS7000** again, select **Remove**, click **next** and click **Yes** to uninstall the NVMS7000 according to the prompts.



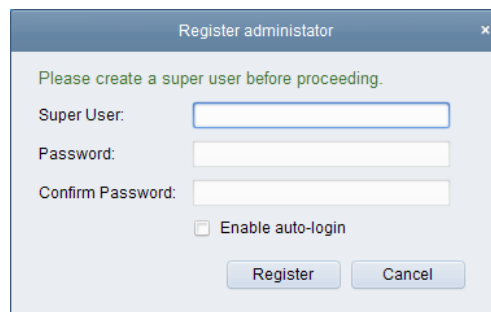
5. Quick Start

5.1 User Registration and Login

For the first time to use NVMS7000 client software, you need to register a super user for login.

Steps:

1. Input the super user name and password.
2. Confirm the password.
3. Optionally, check the checkbox **Enable Auto-login** to log in the software automatically.
4. Click **Register**. Then, you can log in the software as the super user.




Notes:

- A user name cannot contain any of the following characters: / \ : * ? " < > |
- The password cannot be empty and the length of the password should be no less than six characters.

When opening NVMS7000 after registration, you can log in the client software with the registered user name and password.

Steps:

1. Input the user name and password you registered.
2. Optionally, check the checkbox **Enable Auto-login** to log in the software automatically.
3. Click **Login**.



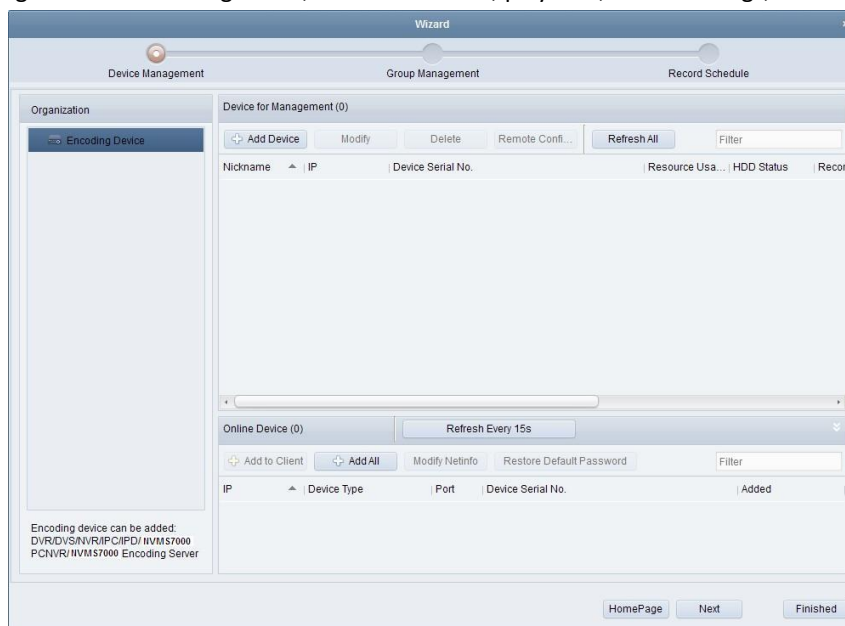
5.2 Wizard for Importing Device

You enter the wizard interface of NVMS7000 after login. This wizard helps you to go through the basic operations of the client software, such as adding devices, importing devices into groups, configuring record schedule, etc. You can also have a quick look at some features of the latest software, including view operation, camera linkage and web access.

Perform the following steps to go through the wizard and study the operations provided.

Step 1: Adding Devices

Devices including network cameras, video encoders, DVRs, NVRs, should be added to the client for the remote configuration and management, such as live view, playback, alarm settings, etc.



You can add the device in the following ways:

- Adding Online Devices.
- Adding Devices Manually.
- Adding Devices by IP Segment.
- Adding Devices by IP Server.
- Adding Devices by HiDDNS.

Adding Online Devices

The active online devices in the same local subnet with the client software will be displayed on a list. You can click the **Refresh Every 15s** button to refresh the information of the online devices.

Steps:

1. Select the devices to be added from the list.
2. Click **Add to Client** to open the device adding dialog box.
3. Input the required information.

Nickname: Edit a name for the device as you want.

Address: Input the device's IP address. The IP address of the device is obtained automatically in this adding mode.

Port: Input the device port number. The default value is *8000*.

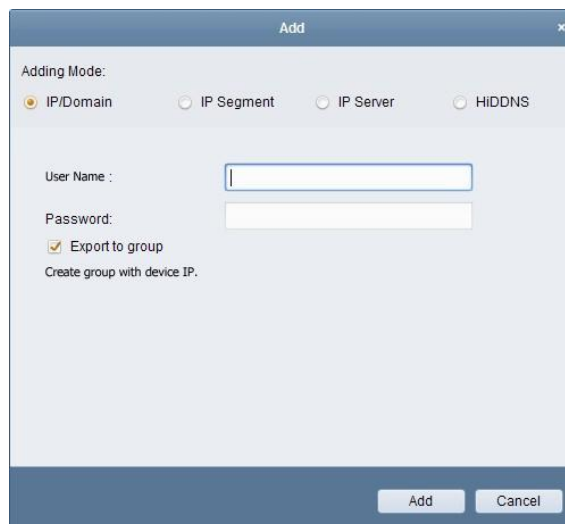
User Name: Input the device user name. By default, the user name is *admin*.

Password: Input the device password. By default, the password is *12345*.

4. Optionally, you can check the checkbox **Export to Group** to create a group by the device name. All the channels of the device will be imported to the corresponding group by default.
5. Click **Add** to add the device.



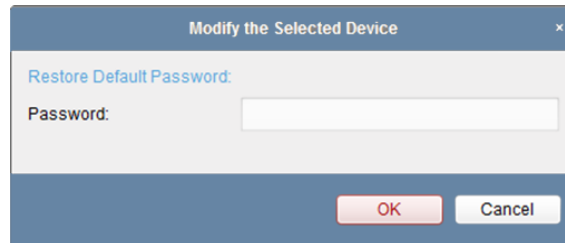
Click **Add All**, input the device user name and password, and you can add all the online devices to the client software.



Select the device from the list, click **Modify Net info**, input the device password, and then you can modify the network information of the selected device, including the IP address, port, gateway, etc.



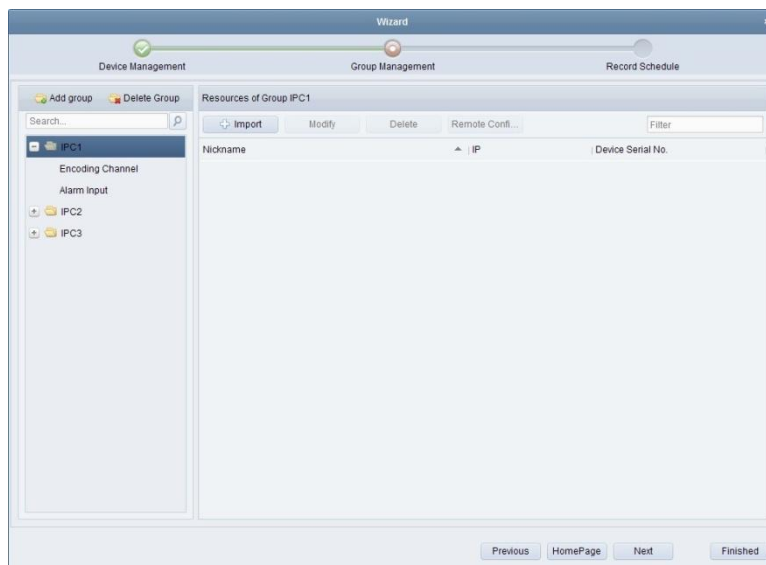
Select the device from the list, click **Restore Default Password**, input the security code, and then you can restore the default password of the selected device.



For details of other device adding methods, please refer to the *User Manual of NVMS7000 V2.0.0*. Click **Next** to continue. You can also click **Homepage** to return to the homepage of the wizard, or click **Finished** to exit.

Step 2: Importing Devices into Groups

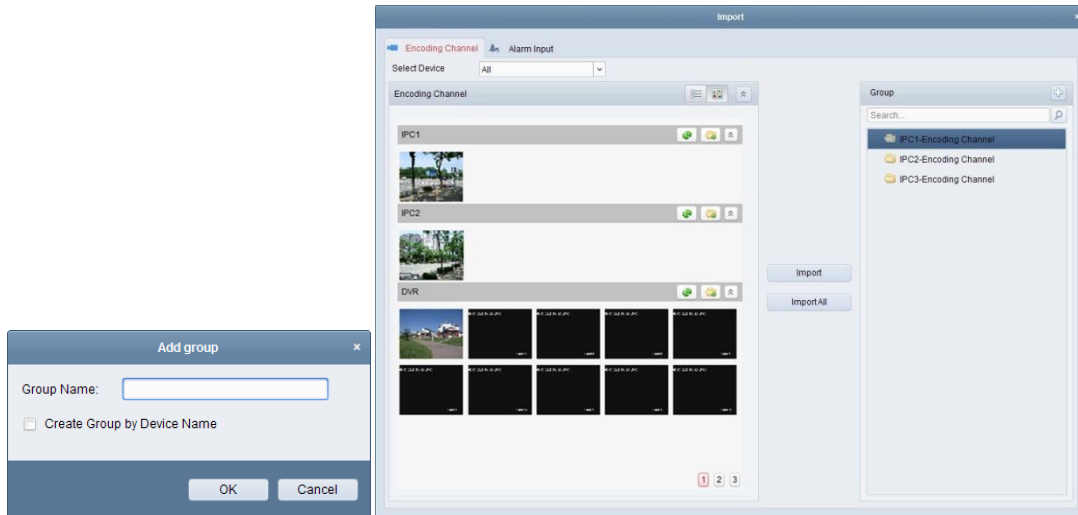
The devices added can be organized into groups for a convenient management. You can get the live view, play back the record files, and do some other operations of the devices through the group.








1. Click **Add Group** to open the Add Group dialog box, input a group name as you want and click **OK**.
2. Click **Import** on Group Management interface, and then click the **Encoding Channel** tab to open the Import Encoding Channel page.
3. Select the thumbnails/names of the encoding channels in the thumbnail/list view.
4. Select a group from the group list.
5. Click **Import** to import the selected encoding channels to the group.

You can also click **Import All** to import all the encoding channels to a selected group.

Note: Up to 64 cameras can be added to one group.



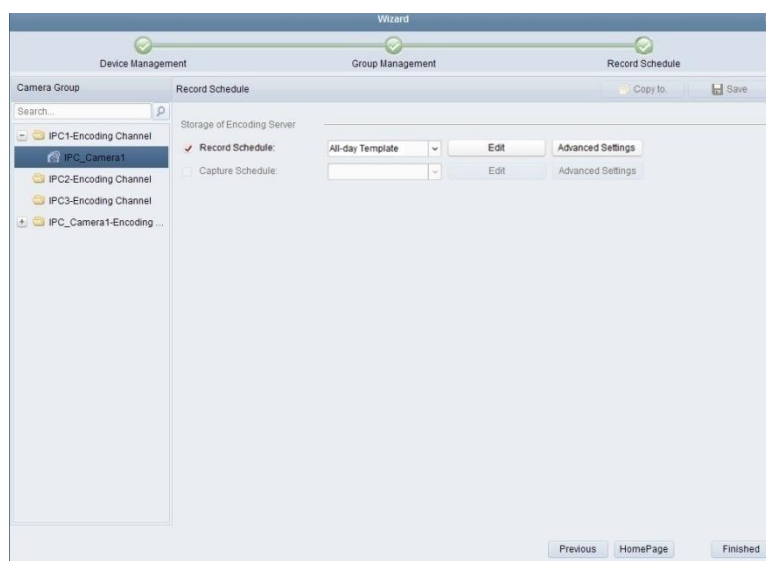
The following buttons are available on the Import Encoding Channel page:

- | | | |
|---|------------------------|---|
|  | List View | View the encoding channel in list view. |
|  | Thumbnail View | View the encoding channel in thumbnail view. |
|  | Refresh | Refresh the latest information of added encoding channels. |
|  | Import | Create a group by device name and import the device to group. |
|  | Collapse/Expand | Collapse/Expand the thumbnails of encoding channels. |

Click **Next** to continue.

Step 3: Configuring the Record Schedule

The video files can be recorded on the HDDs, Net HDDs, SD/SDHC cards on the local device, or the storage server connected.



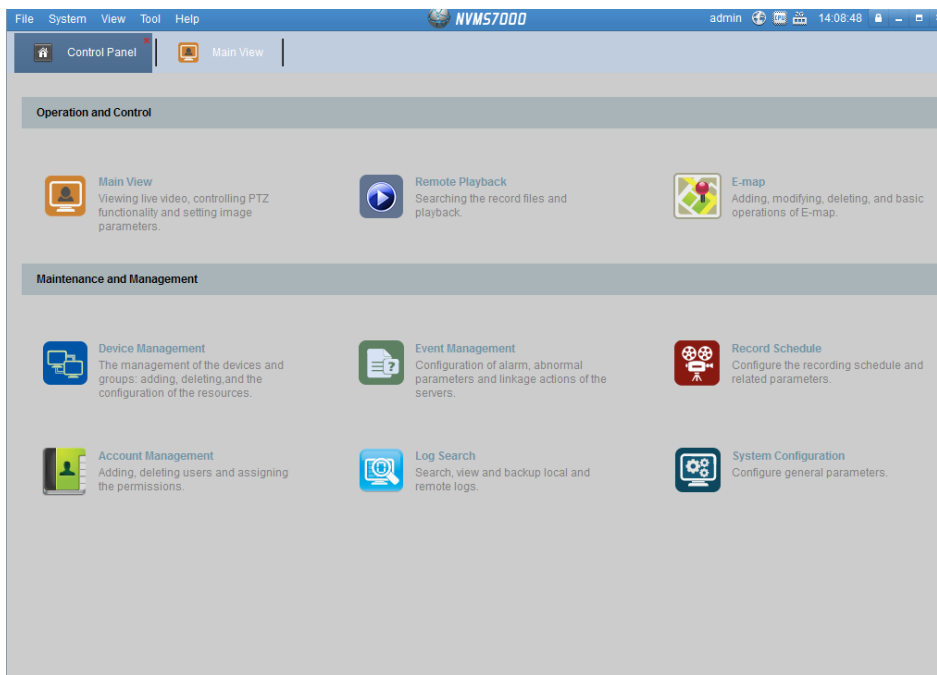
1. Select the camera from the Camera Group list.
2. Check the checkbox **Record Schedule** to enable device local recording.
3. Select the record schedule template from the drop-down list.
4. Click **Advanced Settings** to set the recording parameters.
5. Optionally, click **Copy to...** to copy the record schedule settings to other cameras.
6. Click **Save** to save the settings.

Step 4: Wizard finished.

The wizard is complete. Click **Finished** to close the wizard.

5.3 Control Panel

NVMS7000 provides user friendly GUI for the convenient and effective operation of the software. The main control panel of the software is shown below:



Menu Bar:

File	Open Captured picture	Search and view the captured pictures stored on local PC.
	Open Video File	Search and view the video files recorded on local PC.
	Open Log File	View the backup log files.
	Exit	Exit the NVMS7000client software.
System	Lock	Lock screen operations. Log in the client again to unlock.
	Switch User	Switch the login user.
	Import System Config File	Import client configuration file from your computer.
	Export System Config File	Export client configuration file to your computer.
View	1024*768	Display the window at size of 1024*768 pixels.
	1280*1024	Display the window at size of 1280*1024 pixels.
	1440*900	Display the window at size of 1440*900 pixels.
	1680*1050	Display the window at size of 1680*1050 pixels.
	Full Screen	Display the window in full screen.
	Control Panel	Enter Control Panel interface.
	Main View	Open Main View page.
	Remote Playback	Open Remote Playback page.
	E-map	Open E-map page.
Auxiliary Screen Preview	Open Auxiliary Screen Preview window.	
Tool	Device Management	Open the Device Management page.

	Event Management	Open the Event Management page.
	Record Schedule	Open the Record Schedule page.
	Account Management	Open the Account Management page.
	Log Search	Open the Log Search page.
	System Configuration	Open the System Configuration page.
	Broadcast	Select camera to start broadcasting.
	Device Arming Control	Set the arming status of devices.
	I/O Control	Turn on/off the alarm output.
	Player	Open the player to play the video files.
	Message Queue	Display the information of Email message to be sent.
Help	Open Wizard	Open the guide for the client configuration.
	User Manual (F1)	Click to open the User Manual; you can also open the User Manual by pressing F1 on your keyboard.
	About	View the basic information of the client software.
	Language	Select the language for the client software and reboot the software to activate the settings.

The NVMS7000 client software is composed of the following function modules:



The Main View module provides live view of network cameras and video encoders, and supports some basic operations, such as picture capturing, recording, PTZ control, etc.



The Remote Playback module provides the search, playback, export of record files.



The E-map module provides the displaying and management of E-maps, alarm inputs, hot regions and hot spots.



The Device Management module provides the adding, modifying and deleting of different devices and the devices can be imported into groups for management.



The Event Management module provides the settings of arming schedule, alarm linkage actions and other parameters for different events.



The Record Schedule module provides the schedule settings for recording.



The Account Management module provides the adding, modifying and deleting of user accounts and different permissions can be assigned for different users.



The Log Search module provides the query of system log files and the log files can be filtered by different types.



The System Configuration module provides the configuration of general parameters, file saving paths, alarm sounds and other system settings.

The function modules are easily accessed by clicking the navigation buttons on the control panel or by selecting the function module from the **View** or **Tool** menu.

You can check the information, including current user, network usage, CPU usage, memory usage and time, in the upper-right corner of the main page.


5.4 Live View

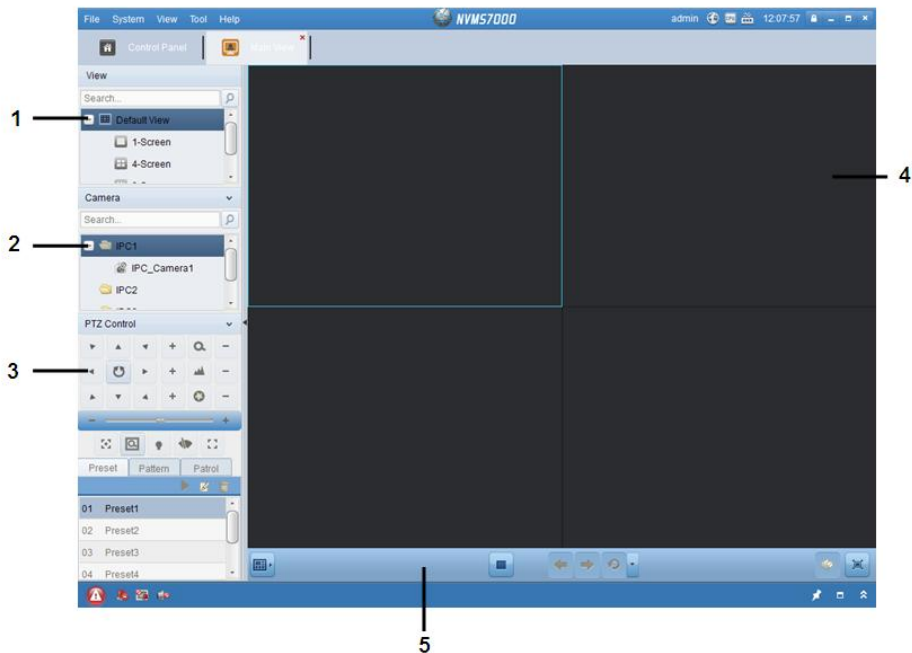
Purpose:

You can view the live video of the added cameras on the Main View page. And some basic operations are supported, including picture capturing, manual recording, PTZ control, etc.

Before you start:

A camera group is required to be defined for live view.

Click the  icon on the control panel, or click **View->Main View** to open the Main View page.



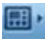



Main View Page

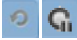

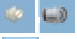


- 1 View List
- 2 Camera List
- 3 PTZ Control Panel
- 4 Display Window of Live View
- 5 Live View Toolbar

Live View Toolbar:



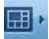

On the Main View page, the following toolbar buttons are available:

	Set View	Set the screen layout mode and save the new settings for the current view; save the current view as another new view.
	Stop Live View	Stop the live view of all cameras.
	Previous	Go for live view of the previous page.
	Next	Go for live view of the next page.

	Resume/Pause	Click to resume/pause the auto-switch in live view.
	Auto-switch	
	Show /Hide the Menu	Show/Hide the config menu of auto-switch. Click again to hide.
	Mute/Audio On	Turn off/on the audio in live view
	Full Screen	Display the live view in full screen mode. Press ESC to exit.

Starting Live View for One Camera

Steps:

1. Open the Main View page.
2. Optionally, click the  icon in live view toolbar, then click the screen layout button  and select the screen layout mode for live view.
3. Click-and-drag the camera to the display window,
Or double-click the camera name after selecting the display window to start the live view.

Note: You can click-and-drag the video of the camera in live view to another display window if needed.

Starting Live View for Camera Group

Steps:

1. Open the Main View page.
2. Click-and-drag the group to the display window,
Or double-click the group name to start the live view.


Note: The display window number is self-adaptive to the camera number of the group.

Starting Live View in Default View Mode

Purpose:

The video of the added cameras can be displayed in different view modes. 4 frequently-used default view modes are selectable: 1-Screen, 4-Screen, 9-Screen and 16-Screen.

Steps:

1. Open the Main View page.
2. Click the icon  to expand the default view list.
3. Click to select the default view mode and the video of the added cameras will be displayed in a sequence in the selected view.


Note: Right-click the current default view name on the list and click **Save View As.**, and you can save the default view as a custom view.




Starting Live View in Custom View Mode

Purpose:

The view mode can also be customized for the video live view.

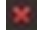

Steps:

1. Open the Main View page.
2. Click the icon  to expand the custom view list.
3. Click **New View** in the custom view list to create a new view.
4. Input the view name and click **Add**. The new view is of 4-Screen mode by default.

- Optionally, Click the  icon in live view toolbar, then click the screen layout button  and select the screen layout mode for the new view.
- Click-and-drag the camera/group to the display window, or double-click the camera/group name in custom view mode to start the live view.
- Click the icon  to save the new view.

Stopping the Live View

Steps:

- Select the display window.
- Click the icon  that appears in the upper-right corner when the mouse pointer is over the display window, or click **Stop Live View** on the right-click menu to stop the live view of the display window. You can also click the button  in live view toolbar to stop all the live view.


5.5 Recording

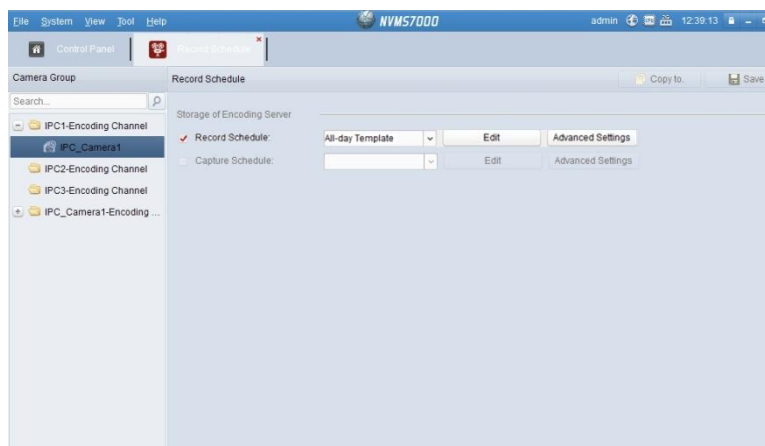
Purpose:

Some local devices, including the DVRs, NVRs, and Network Cameras, provide storage devices such as the HDDs, Net HDDs and SD/SDHC cards for record files.

Before you start:

The newly installed storage devices need to be formatted. Go to the remote configuration page of the device, click **Storage->General**, select the HDD or SD/SDHC card, and click **Format** to initialize the selected storage device.

Click the  icon on the control panel, or click **Tool->Record Schedule** to open the Record Schedule page.



Steps:

- Open the Record Schedule page.
- Select the camera from the Camera Group list.
- Check the checkbox **Record Schedule** to enable device local recording.
- Select the record schedule template from the drop-down list.
All-day Template: for all-day continuous recording.

Weekday Template: for working-hours continuous recording from 8:00 AM to 8:00 PM.

Alarm Template: for motion detection or alarm input triggered recording.

Template 01-08: fixed templates for specific schedules. You can edit the templates if needed.

Custom: can be customized as desired.

If you need to edit or customize the template, see *Configuring Record Schedule Template*.

5. Click **Advanced Settings** to set the recording parameters.
6. Optionally, click **Copy to...** to copy the record schedule settings to other channels.
7. Click **Save** to save the settings.

Parameters	Descriptions
Pre-record	Normally used for the event triggered record, when you want to record before the event happens
Post-record	After the event finished, the video can also be recorded for a certain time.
Video Expired Time	The time for keeping the record files in the storage device, once exceeded, the files will be deleted. The files will be saved permanently if the value is set as 0.
Redundant Record	Save the video files not only in the R/W HDD but also in the redundant HDD.
Record Audio	Record the video files with audio or not.


Configuring Record Schedule Template


Perform the following steps to configure the record schedule template:


If **Template 01-08** is selected from the drop-down list, start from step 1;

If **Custom** is selected from the drop-down list, start from step 2.


1. Click **Edit** to enter the Templates Management interface. Select the template to be set and you can edit the template name.
2. Set the time schedule for the selected template.


 **Schedule Recording** refer to normal schedule record. The schedule time bar is green yellow.


 **Event Recording** refers to the schedule record for the alarm input or motion detection event. The schedule time bar is red.




 **Command** refers to the schedule record triggered by command. The schedule time bar is green.

Note: Record triggered by command is only available for the ATM transactions when the ATM DVR is added to NVMS7000.

When the cursor turns to , you can edit the schedule time bar.

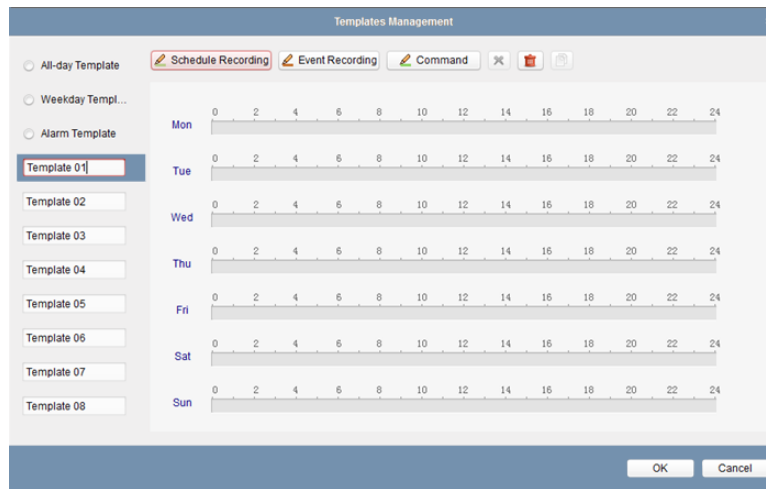
When the cursor turns to , you can move the selected time bar you just edited.

When the cursor turns to , you can lengthen or shorten the selected time bar.

- Optionally, you can select the schedule time bar, and then click the icon  to delete the selected time bar, or click the icon  to delete all the time bars, or click the icon  to copy the time bar settings to the other dates.
- Click **OK** to save the settings.

You can click **Save as Schedule Template** on the Custom Schedule interface, and then the custom template can be saved as template 01--08.


Note: Up to 8 time periods can be set for each day in the record schedule.



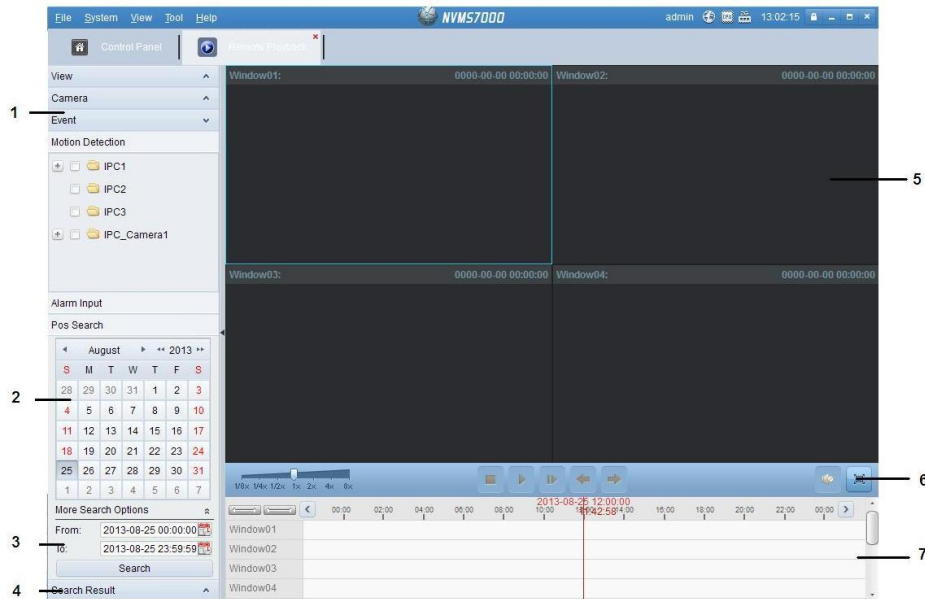
5.6 Playback

Purpose:

The record files stored on the local device or the storage server can be searched by custom view, camera or triggering event, and then can be played back remotely.

Click the  icon on the control panel,

or click **View->Remote Playback** to open the Remote Playback page.



Remote Playback Page

- 1 View List, Camera List and Event List
- 2 Calendar
- 3 Search Options
- 4 Search Result List
- 5 Display Window of Playback
- 6 Playback Toolbar
- 7 Timeline

5.6.1 Normal Playback

Purpose:

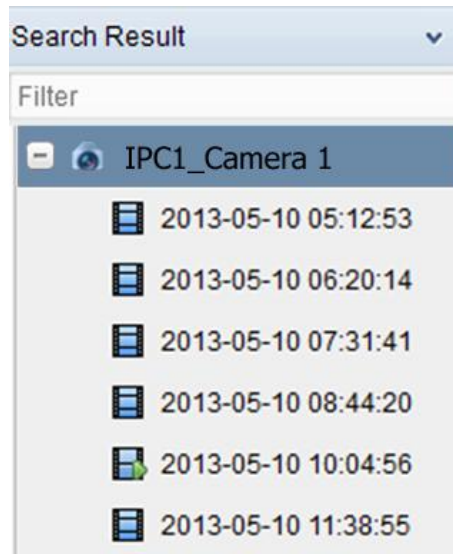
The record files can be searched by custom view or camera for the Normal Playback.

Searching Record Files for Normal Playback

Steps:

1. Open the Remote Playback page.
2. Click ▲ to expand the View List or Camera List on the left-side.
3. Select the view or camera to be searched from the list.
4. Select the day to be searched on the calendar.
You can also click ▼ to show more search options, and then click the icon 📅 to specify the start time and end time for the search.
5. Click **Search**. The record files of the selected view or camera will be displayed on the Search Result list. You can filter the results through the Filter text field.


Note: Up to 16 cameras can be searched simultaneously.



Normal Playback



After searching the record files for the normal playback, you can play back the record files in the following two ways:



- **Playback by File List**

Select the record file from the search result list, and then click the icon  in the toolbar, or double-click the record file to play the video on the display window of playback.

- **Playback by Timeline**

The timeline indicates the time duration for the record file, and the record files of different types are color coded. Click on the timeline to play back the video of the specific time.

You can click  or  to scale up or scale down the timeline bar.

You can click  or  to go to the previous or the next time period.





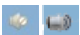

You can use the mouse wheel to zoom in or zoom out on the timeline.



Normal Playback Toolbar:



On the Normal Playback page, the following toolbar buttons are available:

	Async/Sync Playback	Click to play back the record files synchronously/asynchronously.
	Stop Playback	Stop the playback of all cameras.
	Pause/Start Playback	Pause/Start the playback of the record files.
	Single Frame	Play back the record files frame by frame.
	Volume	Click to turn on/off the audio and adjust the audio volume.
	Full Screen	Display the video playback in full screen mode. Press ESC to exit.

Note: You can move the slider on the Playback Speed Bar to set the playback speed.




5.6.2 Event Playback

Purpose:

The recordings triggered by motion detection or alarm input can be searched for Event Playback and this function requires the support of the connected device.

Searching Record Files for Event Playback


Steps:

1. Open the Remote Playback page.
2. Click  to expand the Event List on the left-side.
3. Click **Motion Detection** or **Alarm Input**, and select the cameras or alarm input sensors.
4. Select the day to be searched on the calendar.
You can also click  to show more search options, and then click the icon  to specify the start time and end time for the search.
5. Click **Search**. The recordings from the selected cameras and sensors triggered by motion detection or alarm input will be displayed on the Search Result list.

Event Playback

After searching the recordings triggered by the event, you can play back the record files in the following two ways:

- **Playback by File List**

Select the record file from the search result list, and then click the icon  in the toolbar, or double-click the record file to play the video on the display window of playback.




- **Playback by Timeline**





The timeline indicates the time duration for the record file. Click on the timeline to play back the video of the specific time.

Event Playback Toolbar:



On the Remote Playback page, the following toolbar buttons are available:

	Stop Playback	Stop the playback of all channels.
	Pause/Start Playback	Pause/Start the playback of record files.
	Single Frame	Play back the record files frame by frame.

	Previous Event	Go to the playback of the previous event.
	Next Event	Go to the playback of the next event.
	Volume	Click to turn on/off the audio and adjust the audio volume.
	Full Screen	Display the video playback in full screen mode. Press ESC to exit.

You can move the slider on the Playback Speed Bar to set the playback speed.

5.6.3 Synchronous Playback





Purpose:

In synchronous playback, the record files can be played back in synchronization.

Note: Record files from up to 16 cameras can be played back simultaneously.






Synchronous Playback for Some Searched Cameras

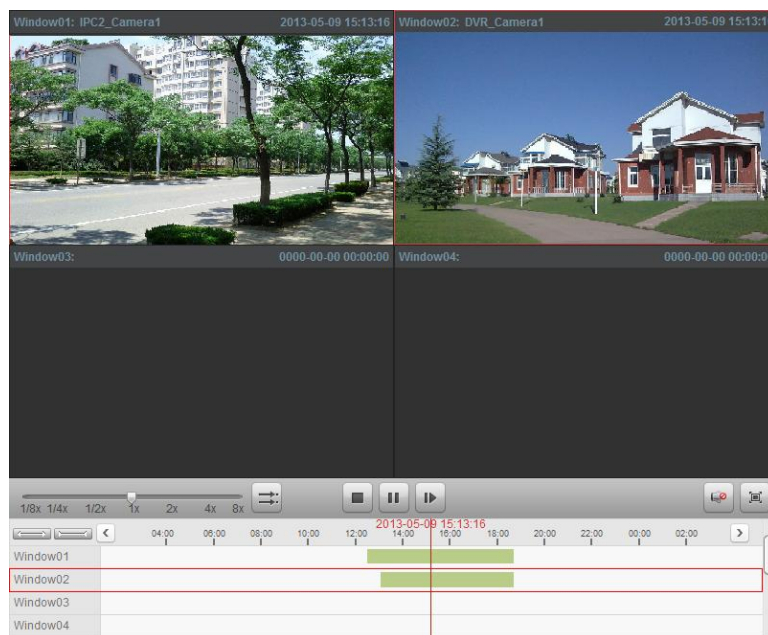
Steps:

1. Start the normal playback of the searched cameras.
2. Click  in the toolbar, and then the record files in normal playback will be played in sync. The icon  turns to .
3. To disable the synchronous playback, click the icon .

Synchronous Playback for All Searched Cameras

Steps:

1. Search the record files for the normal playback.
2. Click  in the toolbar to enable the synchronous playback. The icon  turns to .
3. Select the record file from the list and click , or click on the timeline to start the synchronous playback for all searched cameras.
4. To disable the synchronous playback, click the icon .




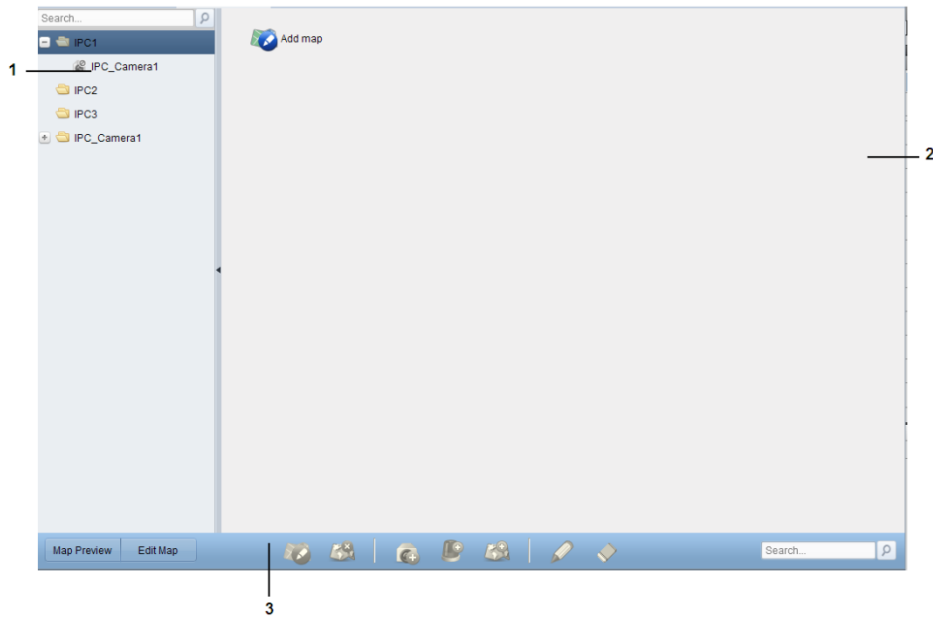
5.7 E-map

Purpose:

The E-map function gives a visual overview of the locations and distributions of the installed cameras and alarm input devices. You can get the live view of the cameras on the map, and you will get a notification message from the map when alarm is triggered.



Click the  icon on the control panel,
or click **View->E-map** to open the E-map page.



E-map Page



- 1 Group List
- 2 Map Display Area
- 3 E-map Toolbar

5.7.1 Adding an E-map

Purpose:

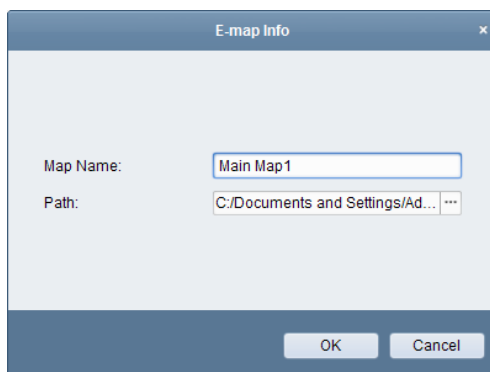
An E-map needs to be added as the parent map for the hot spots and hot regions.

Steps:

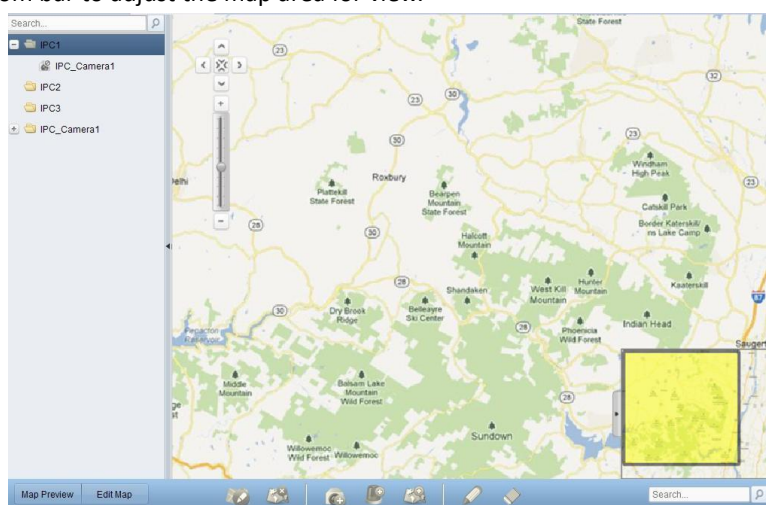
1. Open the E-map page.
2. Select a group for which you want to add a map.
3. Click the icon  in the Map Display Area to open the map adding dialog box.
4. Input a descriptive name of the added map as desired.
5. Click the icon  and select a map file from the local path.
6. Click **OK** to save the settings.

Notes:

- The picture format of the map can only be *.png, *.jpg or *.bmp.
- Only one map can be added to a group.



The map added is displayed in the Map Display Area. Use the mouse wheel to zoom in or zoom out on the map. You can click-and-drag the yellow window in the lower-right corner or use the direction buttons and zoom bar to adjust the map area for view.



Click the button **Edit Map** or **Map Preview** in the E-map toolbar to enter the map editing mode or map preview mode.







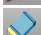


E-map Toolbar in Map Editing Mode:



E-map Toolbar in Map Preview Mode:



On the E-map page, the following toolbar buttons are available:

- | | | |
|---|---------------------------|---|
|  | Modify Map | Modify the map information, including the map name and file path. |
|  | Delete Map | Delete the current map. |
|  | Add Camera | Add a camera as the hot spot on the map. |
|  | Add Alarm Input | Add an alarm input sensor as the hot spot on the map. |
|  | Add Hot Region | Add a map as the hot region on the current map. |
|  | Modify | Modify the information of the selected hot spot or hot region. |
|  | Delete | Delete the selected hot spot or hot region. |
|  | Clear Alarm Info | Clear the alarm information displayed on the map. |
|  | Back to Parent Map | Go back to the parent map. |

5.7.2 Hot Spot Function


Purpose:

The cameras and alarm inputs can be added on the map and are called the hot spots. The hot spots show the locations of the cameras and alarm inputs, and you can also get the live view and alarm information of the surveillance scenarios through the hot spots.

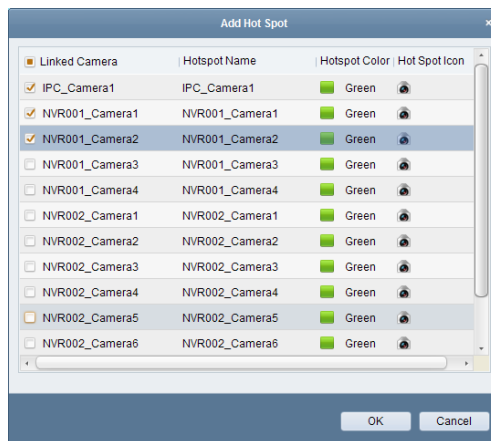
Adding Hot Spots

Adding Cameras as Hot Spots

Steps:


1. Click the **Edit Map** button in the E-map toolbar to enter the map editing mode.
2. Click the icon  in the toolbar to open the Add Hot Spot dialog box.
3. Check the checkboxes to select the cameras to be added.
4. Optionally, you can edit hot spot name, select the name color and select the hot spot icon.
5. Click **OK** to save the settings.

You can also click-and-drag the camera icons from the group list to the map directly to add the hot spots.

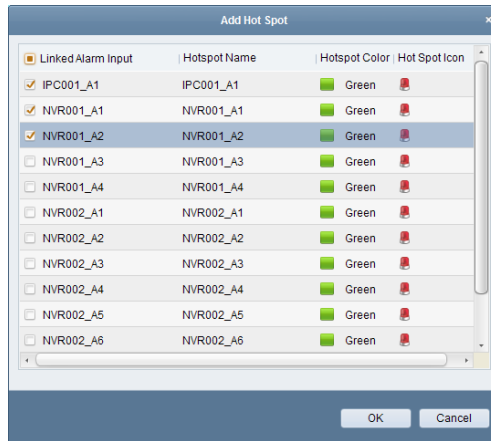


Adding Alarm Inputs as Hot Spots

Steps:

1. Click the **Edit Map** button in the E-map toolbar to enter the map editing mode.
2. Click the icon  in the toolbar to open the Add Hot Spot dialog box.
3. Check the checkboxes to select the alarm inputs to be added.
4. Optionally, you can edit hot spot name, select the name color and select the hot spot icon.
5. Click **OK** to save the settings.

You can also click-and-drag the alarm input icons from the alarm input list to the map directly to add the hot spot.



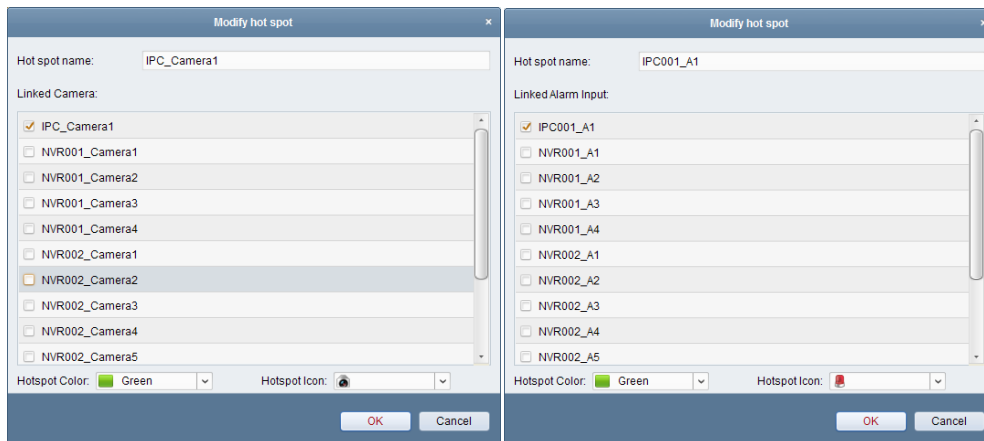
Modifying Hot Spots

You can modify the information of the added hot spots on the map, including the name, the color, the icon, etc.

Steps:

1. Click the **Edit Map** button in the E-map toolbar to enter the map editing mode.
2. Select the hot spot icon on the map and then click in the toolbar, or double-click the hot spot icon on the map to open the Modify Hot Spot dialog box.
3. You can edit the hot spot name in the text field and select the color, the icon and the linked camera or alarm input.
4. Click **OK** to save the new settings.

To delete the hot spot, select the hot spot icon and click in the toolbar.

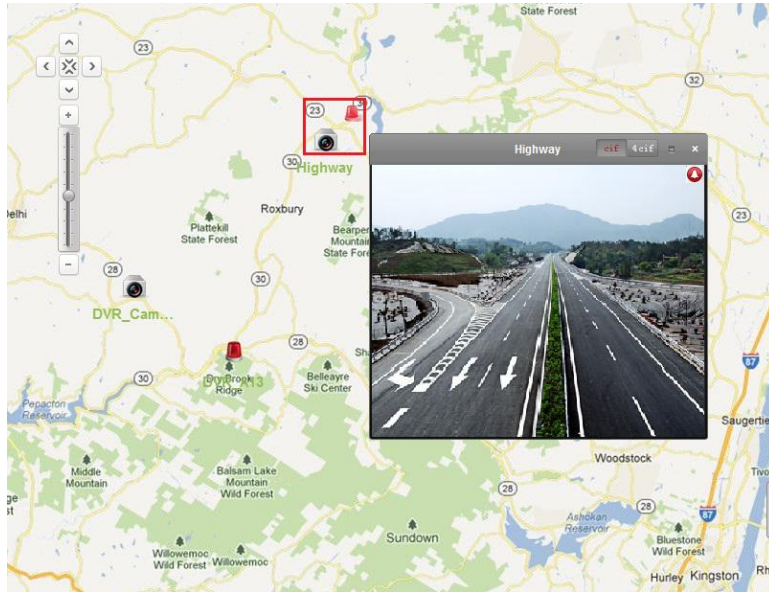


Previewing Hot Spots

Steps:

1. Click the **Map Preview** button in the E-map toolbar to enter the map preview mode.
2. Double-click the camera hot spots, and you can get the live view of the cameras.
3. If there is any alarm triggered, an icon will appear and twinkle near the hot spot. Click the alarm icon, and then you can check the alarm information, including alarm type and triggering time.

Note: To display the alarm information on the map, the Alarm on E-map functionality needs to be set as the alarm linkage action.



5.7.3 Hot Region Function

Purpose:

The hot region function links a map to another map. When you add a map to another map as a hot region, an icon of the link to the added map is shown on the main map. The added map is called child map while the map to which you add the hot region is the parent map.


Note: A map can only be added as the hot region for one time.

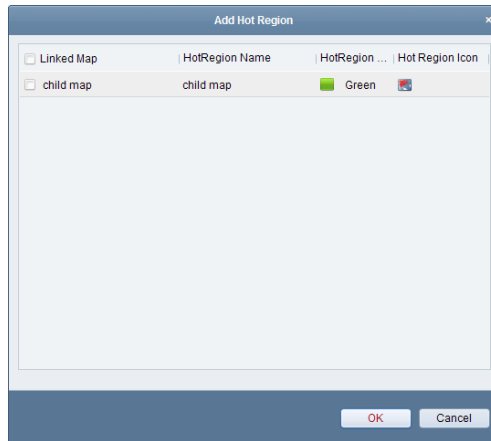
Adding Hot Regions

Before you start:

Add another map to the group.

Steps:

1. Click the **Edit Map** button in the E-map toolbar to enter the map editing mode.
2. Select an added map as the parent map.
3. Click the icon  in the toolbar to open the Add Hot Region dialog box.
4. Check the checkbox to select the child map to be linked.
5. Optionally, you can edit the hot region name, and select the hot region color and icon.
6. Click **OK** to save the settings. The child map icons are added on the parent map as the hot regions. You can click-and-drag the child map icons to move the hot regions to the desired locations.





Modifying Hot Regions

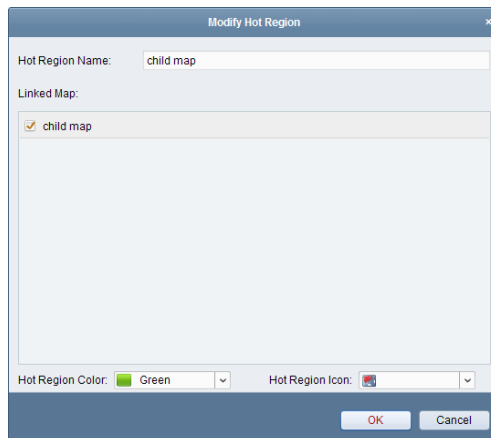
Purpose:

You can modify the information of the hot regions on the parent map, including the name, the color, the icon, etc.

Steps:


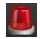
1. Click the **Edit Map** button in the E-map toolbar to enter the map editing mode.
2. Select the hot region icon on the parent map and then click  in the toolbar, or double-click the hot region icon to open the Modify Hot Region dialog box.
3. You can edit the hot region name in the text field and select the color, the icon and the linked child map.
4. Click **OK** to save the new settings.

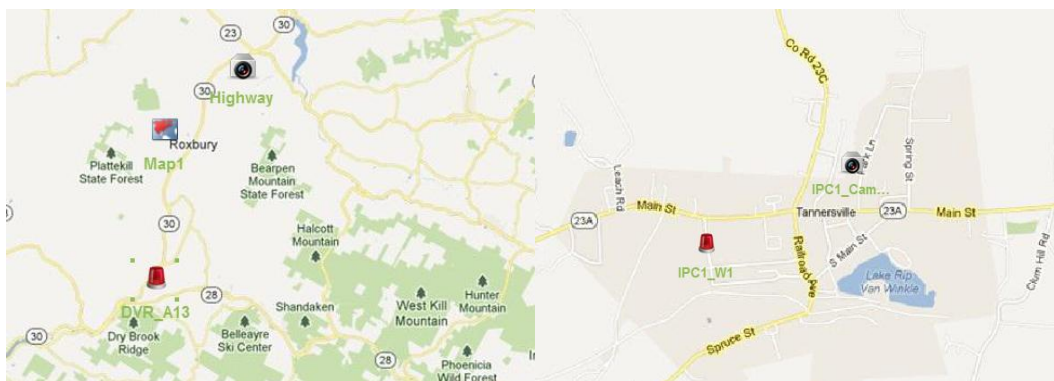
To delete the hot region, select the hot region icon and click  in the toolbar.




Previewing Hot Regions

Steps:

1. Click the **Map Preview** button in the E-map toolbar to enter the map preview mode.
2. Click the hot region icon to go to the linked child map.
3. The hot spots can also be added on the hot regions.
4. You can click the icon  in the toolbar to go back to the parent map.
You can also click the icon  in the toolbar to clear the alarm information.



6. Exit System

Click **File** on the top menu and select **Exit**, or click  on the upper-right corner of the main interface, and then a confirmation dialog pops up. Click **OK** to exit NVMS7000.