



## HD-TVI 1080P Turret & Bullet Camera User Manual

Thank you for purchasing our product. If there are any questions, or requests, please do not hesitate to contact the dealer.

This manual may contain several technical incorrect places or printing errors, and the content is subject to change without notice. The updates will be added to the new version of this manual. We will readily improve or update the products or procedures described in the manual.

### DISCLAIMER STATEMENT

Underwriters Laboratories Inc. ("UL") has not tested the performance or reliability of the security or signaling aspects of this product. UL has only tested for fire, shock or casualty hazards as outlined in UL's Standard(s) for Safety, UL60950-1. UL Certification does not cover the performance or reliability of the security or signaling aspects of this product. UL MAKES NO REPRESENTATIONS, WARRANTIES OR CERTIFICATIONS WHATSOEVER REGARDING THE PERFORMANCE OR RELIABILITY OF ANY SECURITY OR SIGNALING RELATED FUNCTIONS OF THIS PRODUCT.

## Regulatory Information

### FCC Information

**FCC compliance:** This equipment has been tested and found to comply with the limits for a digital device, pursuant to part 15 of the FCC Rules. These limits are designed to provide reasonable protection against harmful interference when the equipment is operated in a commercial environment. This equipment generates, uses, and can radiate radio frequency energy and, if not installed and used in accordance with the instruction manual, may cause harmful interference to radio communications. Operation of this equipment in a residential area is likely to cause harmful interference in which case the user will be required to correct the interference at his own expense.

### FCC Conditions

This device complies with part 15 of the FCC Rules. Operation is subject to the following two conditions:

1. This device may not cause harmful interference.
2. This device must accept any interference received, including interference that may cause undesired operation.

### EU Conformity Statement



This product and - if applicable - the supplied accessories too are marked with "CE" and comply therefore with the applicable harmonized European

standards listed under the Low Voltage Directive 2006/95/EC, the EMC Directive 2004/108/EC, the RoHS Directive 2011/65/EU.



2012/19/EU (WEEE directive): Products marked with this symbol cannot be disposed of as unsorted municipal waste in the European Union. For proper recycling, return this product to your local supplier upon the purchase of equivalent new equipment, or dispose of it at designated collection points. For more information see: [www.recyclethis.info](http://www.recyclethis.info).



2006/66/EC (battery directive): This product contains a battery that cannot be disposed of as unsorted municipal waste in the European Union.

See the product documentation for specific battery information. The battery is marked with this symbol, which may include lettering to indicate cadmium (Cd), lead (Pb), or mercury (Hg).

For proper recycling, return the battery to your supplier or to a designated collection point. For more information see: [www.recyclethis.info](http://www.recyclethis.info).

## 1 Introduction

### 1.1 Product Features

This camera adopts new generation sensor with high sensitivity and advanced circuit board design technology. It possesses the features of high resolution, low distortion, and low noise, etc. It is extremely suitable for supervisory system and image processing system.

The main features are as follows:

- High performance CMOS sensor and high resolution bring high-quality image;
- Low illumination;
- Support IR cut filter with auto switch;
- OSD menu, parameters are configurable;
- Support auto white balance, auto gain control, electronic shutter control and internal synchronization;
- SMART IR mode;
- Unit transmission control;
- Advanced 3-axis design meets different installation requirements.

### 1.2 Overview

#### 1.2.1 Overview of Type I Camera

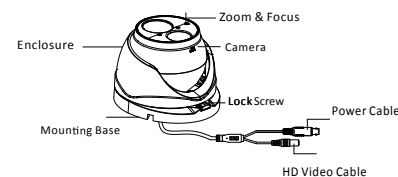


Figure 1-1 Overview of Type I Camera

#### 1.2.2 Overview of Type II Camera

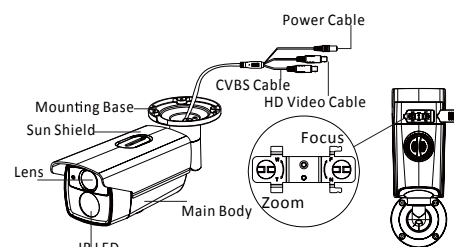


Figure 1-2 Overview of Type II Camera

## 2 Installation

### Before you start:

- Please make sure that the device in the package is in good condition and all the assembly parts are included.
- Make sure that all the related equipment is power-off during the installation.
- Check the specification of the products for the installation environment.
- Check whether the power supply is matched with your power output to avoid damage.
- Please make sure the wall is strong enough to withstand three times the weight of the camera and the mounting.
- If the wall is the cement wall, you need to insert expansion screws before you install the camera. If the wall is the wooden wall, you can use self-tapping screw to secure the camera.
- If the product does not function properly, please contact your dealer or the nearest service center. Do not disassemble the camera for repair or maintenance by yourself.

### 2.1 Installation of Type I Camera Steps:

1. Drill the screw holes and the cable hole on the ceiling according to the supplied drill template.

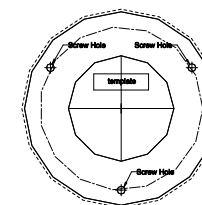


Figure 2-1 The Drill Template

2. Release the lock screw to disassemble the camera from the mounting base.

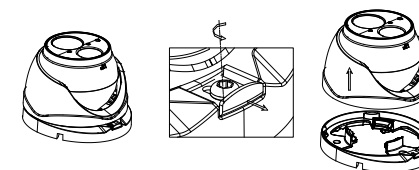


Figure 2-2 Release The Lock Screw

3. Fix the mounting base to the ceiling.

- 4.Route the cables to the cable hole and connect the corresponding cables.
- 5.Secure the camera to the mounting base by tightening the lock screw.
- 6.Adjust the camera according to the figure below to get an optimum angle.

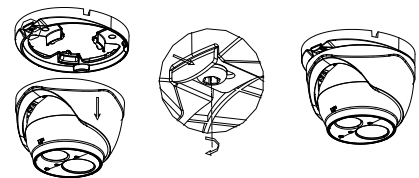


Figure 2-3 3-axis Adjustment

- 7.Use the screwdriver to adjust the ZOOM screw and the FOCUS screw until you get the optimum image.

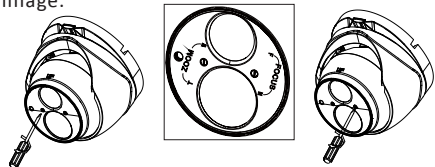


Figure 2-4 Zoom and Focus Adjustment

## 2.2 Installation of Type II Camera



Both wall mounting and ceiling mounting are suitable for type bullet camera. Ceiling mounting will be taken as an example in the section. And you can take steps of ceiling mounting as a reference if wall mounting is adopted.

### Steps:

- 1.Drill the screw holes and the cable hole in the ceiling according to the supplied drill template.
- 2.Hammer the supplied plastic expansion bolt into the screw holes.

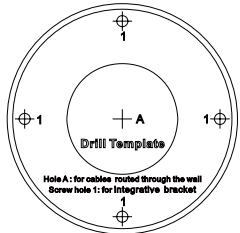


Figure 2-5 Drill Template

- 3.Route the cables to the cable hole and connect the corresponding cables.
- 4.Fix the camera to the ceiling with the supplied screws.

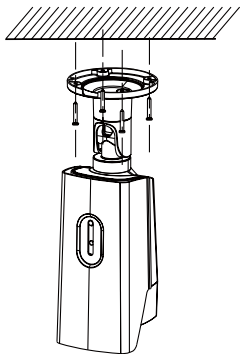


Figure 2-6 Fix the Camera to the Ceiling

5. Adjust the surveillance angle.
  - 1). Loosen No.1 adjusting screw to adjust the pan position (0° ~ 360°).
  - 2).Tighten No.1 adjusting screw.
  - 3). Loosen No.2 adjusting screw to adjust the tilting position(0° ~ 90°).
  - 4).Tighten No.2 adjusting screw.
  - 5). Loosen No.3 adjusting screw to adjust the rotation position (0° ~ 360°).
  - 6).Tighten No.3 adjusting screw.

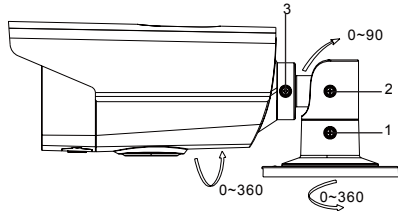


Figure 2-7 3-axis Adjustment

## 3 Menu Operation

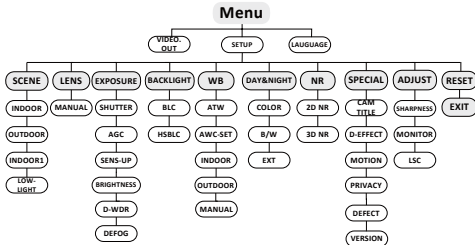


Figure 3-1 Main Menu



A coaxial camera controller (purchase separately) is required to select the menu and adjust the camera parameters.

### 3.1 VIDEO.OUT

PAL or NTSC is selectable .

### 3.2 LANGUAGE

English, Japanese, CHN1, CHN2, Korean, German, French, Italian, Spanish, Polish, etc., are selectable.

### 3.3SETUP

#### 3.3.1 SCENE

You can select indoor, outdoor, indoor 1 and low-light as the working environments.

#### 3.3.2 LENS

The camera is equipped with a fixed lens.

#### 3.3.3 EXPOSURE

**SHUTTER:** AUTO,1/25, 1/50, FLK, 1/200, 1/400, 1/1k, 1/2k, 1/5k, 1/10k, 1/50k are selectable.

**AGC:** You can set the AGC value from 0 to 15.

**SENS-UP:** You can set the SENS-UP to OFF or AUTO.

**BRIGHTNESS:** You can set the brightness value from 1 to 100.

**DEFOG:** You can set the defog function as ON to enable the function. Position, size, and the defog gradation are configurable.

EXPOSURE	
1. SHUTTER	AUTO
2. AGC	OFF
3. SENS-UP	---
4. BRIGHTNESS	--- ----- 40
5. DEFOG	OFF
6. BACKLIGHT	OFF
7. RETURN	RET

Figure 3-2 Exposure

HSBLC	
1. SELECT	AREA 1
2. DISPLAY	ON
3. LEVEL	--- ----- 40
4. MODE	ALL DAY
5. BLACK MASK	ON
6. DEFAULT	---
7. RETURN	RET

Figure 3-3 HSBLC

### 3.3.4 Backlight

#### Backlight Compensation (BLC):

**-GAIN:** Set the gain of BLC as High, Middle, or Low.

**-AREA:** Press the up/down/left/right button to define the BLC position and size. Select RET or AGAIN to go back the BLC menu or re-define the BLC area.

**-Default:** Restore the BLC settings to the default.

**HSBLC:** Select an HSBLC area. Set the DISPLAY status as ON. Press the up/down/left/right button to define the area position and size. Set the HSBLC LEVEL from 0 to 100. Select ALL DAY or Night for the HSBLC mode. Set the BLACK MASK status as ON or OFF.

### 3.3.5 White Balance (WB)

INDOOR, OUTDOOR, MANUAL, ATW (Auto-tracking White Balance), AWC→SET are selectable.

### 3.3.6 Day & Night

Color, B/W, and EXT are selectable for DAY and NIGHT switches.

### 3.3.7 NR

**2D NR:** You can set 2D NR status as ON or OFF.

**3D NR:** Set the Smart NR status as ON and adjust the 3D smart NR sensitivity ranges from 0 to 100. Set the 3D NR LEVEL ranges from 0 to 100. Set the

START. AGC level as the threshold to enable AGC, and set the END. AGC level as the threshold to disable AGC.

2D&3D NR	
1. 2DNR	OFF
2. 3DNR	ON
3. RETURN	RET

Figure 3-5 NR

3D NR	
1. SMART NR	ON
2. LEVEL	----- ---80
3. START. AGC	- -----10
4. END. AGC	- -----10
5. RETURN	RET

Figure 3-6 3D NR

### 3.3.8 SPECIAL

**Camera Title:** Edit the camera title on this section.

#### D-effect:

**-FREEZE:** Set the freeze function as ON or OFF.

**-MIRROR:** OFF, MIRROR, V-FLIP, and ROTATE are selectable for mirror.

**-D-ZOOM:** Define the zoom area by configuring the position from PAN & TILT.

**-SMART D-ZOOM:** The D-Zoom area, sensitivity and time are configurable.

**-NEG.IMAGE:** Set the NEG IMAGE as ON or OFF.

SPECIAL	
1. CAM TITLE	ON
2. D-EFFECT	---
3. MOTION	OFF
4. PRIVACY	OFF
5. LANGUAGE	ENG
6. DEFECT	---
7. VERSION	130722
8. RETURN	RET

Figure 3-7 Special

MOTION	
1. SELECT	AREA 1
2. DISPLAY	ON
3. SENSITIVITY	----- ---30
4. MOTION VIEW	ON
5. DEFAULT	---
6. RETURN	RET

Figure 3-8 Motion Detection

**Motion:** Select a MOTION area. Set the DISPLAY status as ON or OFF. Press the up/down/left/right button to define the position and size of the area. Set the SENSITIVITY from 0 to 60. Set the MOTION VIEW status as ON or OFF.

**Privacy:** Select a PRIVACY area. Set the DISPLAY status as INV, MOSAIC, COLOR or OFF. Press the up/down/left/right button to define the position and size of the area.

**Defect:** LIVE DPC, STATIC DPC and Black DPC are adjustable in this section.

**Version:** You can check the software version of the device.

PRIVACY	
1. SELECT	AREA 1
2. DISPLAY	MOSAIC
3. COLOR	10
4. TRANS.	1
5. DEFAULT	---
6. RETURN	RET

Figure 3-9 Privacy Mask

ADJUST	
1. SHARPNESS	----- 15
2. MONITOR	LCD
3. LSC	OFF
4. VIDEO. OUT	PAL
5. RETURN	RET

Figure 3-10 Adjust

### 3.3.9 ADJUST

**Sharpness:** Adjust the sharpness from 0 to 15.

**Monitor:** Monitor CRT, and Monitor LCD are selectable.

**LSC:** Set the LSC status as ON or OFF.

### 3.3.10 RESET

Reset all the settings to the default.

### 3.3.11 EXIT

Press OK to exit the menu.